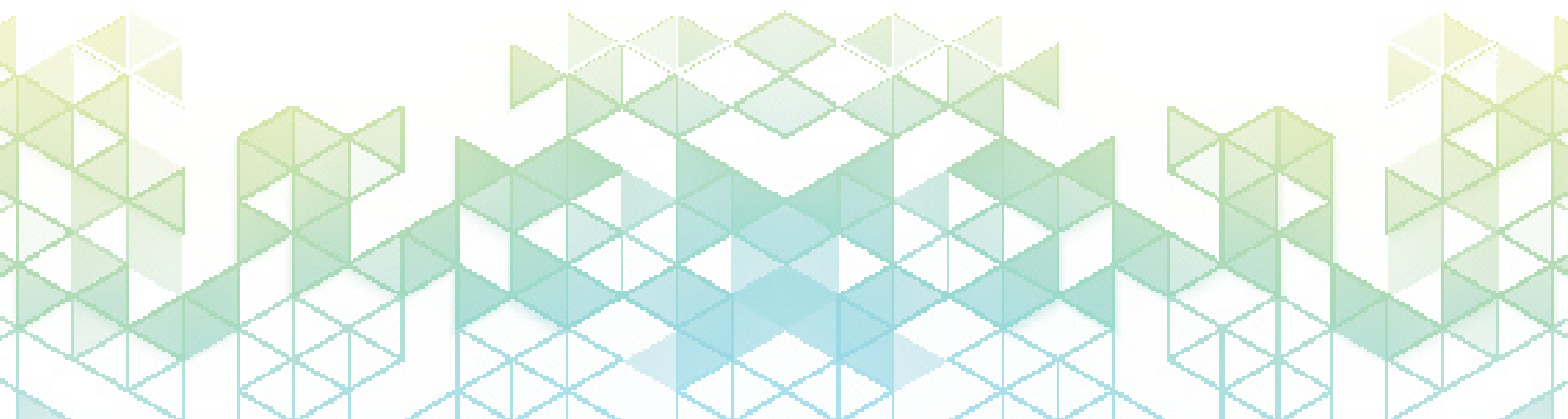




CAIN ELLSWORTH  
& COMPANY, LLP



## Protecting Wealth With a Life Insurance Trust



A life insurance trust is an estate planning tool for maximizing the value of an estate passed to one's heirs. More specifically, a life insurance trust is an irrevocable trust with a life insurance policy as the main asset that enables a grantor to:

- Take advantage of potential tax savings, such as avoidance of state and federal inheritance tax,
- Use gift tax provisions to cover the cost of annual insurance premiums,
- Control when beneficiaries will have access to life insurance payments, and
- Protect life insurance assets from the creditors of a beneficiary.

This document takes a brief look at how life insurance trusts work and the purpose behind them.

## How Does a Life Insurance Trust Work?

An irrevocable life insurance trust or "ILIT" can be established by the owner of a life insurance policy or someone who intends to purchase such a policy. The creator of the trust is referred to as the Grantor. While the Grantor sets the terms of the trust, they cannot change or revoke the trust once it is signed - this is what makes it irrevocable.

The Grantor may transfer an existing life insurance policy into the trust, or the trust may purchase a new life insurance policy. Regardless, once the trust owns the life insurance policy, it is considered outside the Grantor's control and will not count toward their taxable estate.

ILITs are often set up to help pay estate taxes on the value of assets in an estate that exceed the lifetime gift tax exemption. Currently, the lifetime gift tax exemption is \$11.7 million per individual, but proposed legislation may cut this in half. If enacted, a lower lifetime exemption would cause a greater number of estates to be subject to taxes.

ILITs can also be used to protect youthful beneficiaries from unexpected losses or mismanagement of funds. When creating the trust, the Grantor can specify how, when and to whom distributions will be made. For example, a trust with two minor beneficiaries and a \$1 million policy might specify that each child receives \$250,000 to attend college and \$250,000 once they graduate.



An irrevocable trust also provides certain legal protections against creditors because the beneficiaries do not legally own the assets in the trust, nor do the beneficiaries control how funds are distributed.

## Rules to Know About Irrevocable Life Insurance Trusts

Life insurance policies must be transferred to an ILIT at least three years before the Grantor's death; otherwise, the life insurance proceeds may be included in the Grantor's taxable estate. To bypass the 3-year rule, an ILIT that has existed for at least three years can directly purchase the life insurance policy instead of transferring an existing policy into the trust.

Also, if you name minor children as beneficiaries of the policy, a court may have to appoint a conservator to manage the assets on behalf of the minors. This can be a lengthy, costly, complicated process that is best avoided by designating a trustee responsible for complying with the terms of the trust. No matter who you choose as trustee, they are obligated to act in the trust's best interest and use reasonable care in performing their duties.

You can take advantage of the annual gift tax exclusion by using a tool known as the Crummey Power. With Crummey powers, annual insurance premiums paid by your ILIT may qualify for the annual gift tax exclusion (up to \$15,000 currently). By doing so, the annual premium payments will be deductible in addition to the asset bypassing inheritance taxation.

## What is the Purpose of a Life Insurance Trust?

An ILIT is ideal for clients whose life insurance policies, combined with other assets, put their heirs at risk of paying state or federal estate or inheritance taxes. With an ILIT, you can protect life insurance from taxation, loss to creditors or former spouses of your heirs, and losses due to mismanagement. You can also specify how you want insurance proceeds to be distributed, potentially preventing a lump-sum payment to youthful heirs ill-equipped to manage a large payout. ILITs are particularly useful for dependents with disabilities, minor children, or those experiencing financial difficulties like bankruptcy or divorce.



# Final Thoughts

This document is meant to provide an overview of life insurance trusts and is not a substitute for speaking with one of our advisors. If you have any questions about life insurance trusts or would like to discuss your unique situation, please contact our office.



## About Cain Ellsworth.

Cain Ellsworth is not all things to all people. Instead, we specialize in serving small to medium businesses in banking, manufacturing, property and casualty insurance, plus a variety of other industries. And we dedicate significant resources to assure that we are well-informed in each of them.



### **Cain Ellsworth:**

Sheldon, IA Office  
1008 Third Avenue  
PO Box 449  
Sheldon, IA 51201

Sioux Falls, SD Office  
5130 E 57th Street  
Sioux Falls, SD 57108



IA - (712) 324-4614  
SD - (605) 610-4611



[sdykstra@cainellsworth.com](mailto:sdykstra@cainellsworth.com)



[www.cainellsworth.com](http://www.cainellsworth.com)